

Selection Guide

Cable Holder, Cable and Components



REUTLINGER GmbH

Züricher Str. 3
60437 Frankfurt am Main
Germany

Phone: +49 69 965228-0
Telefax: +49 69 965228-30
E-Mail: sales@reutlinger.net



STEEL CABLE GALVANIZED, HIGH TENSILE, DIN EN 12385-4 7×7, 2.300 N/mm² MAX. LOAD IN KG

Ø CABLE IN MM ▷	0.45	0.54	0.63	0.81	1.0	1.2	1.5	1.8	2.0	2.5	3.0
TYPE 10			8.0	11							
TYPE 12				9.0	13	17					
TYPE 15					13	17	25				
TYPE 18 3-balls					13	18	27	30			
TYPE 18 6-balls					13	18	33	39			
TYPE 20 3-balls					13	18	28	34	49		
TYPE 20 6-balls					13	20	31	39	55		
TYPE 25							24	34	48	68	
TYPE 30 3-balls									40	65	85
TYPE 30 6-balls									50	75	105

STAINLESS STEEL CABLE DIN EN 12385-4 7×7, 1.570 N/mm² MAX. LOAD IN KG

Ø CABLE IN MM ▷	0.45	0.54	0.63	0.81	1.0	1.2	1.5	1.8	2.0	2.5	3.0
TYPE 10	1.5	2.5	3.0	7.0	10						
TYPE 12			4.0	8.0	10	15					
TYPE 15					10	15	20				
TYPE 18 3-balls					9.0	15	20	30			
TYPE 18 6-balls					10	15	20	30			
TYPE 20 3-balls					10	15	20	30	34		
TYPE 20 6-balls					10	15	20	30	34		
TYPE 25							20	30	34	45	
TYPE 30 3-balls									34	50	70
TYPE 30 6-balls									40	60	85



The values determined (operating coefficient / safety factor 5) only refer to our cable holders in connection with the cable specified below. When using cables with a different cable strength, the following table is not valid. Factory certificates with special tests at short notice on request.

CEILING ATTACHMENTS

WITH SCREW CAP



WITH CABLE HOLDER



SINGLE PIECE



CABLE TERMINATIONS

CYLINDER



- 0.45
- 0.54
- 0.63
- 0.81
- 1.0
- 1.2
- 1.5
- 1.8
- 2.0
- 2.5
- 3.0

BALL



- 0.45
- 0.54
- 0.63
- 0.81
- 1.0
- 1.2
- 1.5
- 1.8
- 2.0
- 2.5
- 3.0

THREADED TERMINAL



- 0.45
- 0.54
- 0.63
- 0.81
- 1.0
- 1.2
- 1.5
- 1.8
- 2.0
- 2.5
- 3.0

LOOP



- 0.45
- 0.54
- 0.63
- 0.81
- 1.0
- 1.2
- 1.5
- 1.8
- 2.0
- 2.5
- 3.0

Z-THIMBLE



- 0.45
- 0.54
- 0.63
- 0.81
- 1.0
- 1.2
- 1.5
- 1.8
- 2.0
- 2.5
- 3.0

STEEL HOOK



- 0.45
- 0.54
- 0.63
- 0.81
- 1.0
- 1.2
- 1.5
- 1.8
- 2.0
- 2.5
- 3.0

REUTLINGER

In 1873, Wilhelm Benjamin Reutlinger I began with the industrial production and processing of wire and hemp ropes. Under the leadership of Dipl.-Ing. Wolf Reutlinger, who runs the company since 1987, the tradition of craftsmanship has been extended by developments and construction for new areas of application.

Reutlinger GmbH, one of the world's largest manufacturers of suspension systems, is based in Frankfurt am Main. The company headquarters is the linchpin of the company and serves a network of foreign representatives all over the world.

Please inform yourself about further products on our homepage. We will be happy to provide you with individual and personal advice at any time also by telephone.



CABLE HOLDER

LATERAL CABLE EXIT



ARTICLE DESCRIPTION	COUPLING THREAD	THREAD DEPTH	ARTICLE-NUMBER	0.45	0.54	0.63	0.81	1.0	1.2	1.5	1.8	2.0	2.5	3.0
TYPE 10 ZW M4i	M4i	4 mm	193.008.007	■	■									
TYPE 12 ZW M4i	M4i	4 mm	193.000.142			■	■	■	■					
TYPE 15 ZW M4i	M4i	5 mm	193.000.179					■	■	■				
TYPE 18 ZW M4i	M4i	6 mm	193.000.051					■	■	■	■			



ARTICLE DESCRIPTION	COUPLING THREAD	THREAD DEPTH	ARTICLE-NUMBER	0.45	0.54	0.63	0.81	1.0	1.2	1.5	1.8	2.0	2.5	3.0
TYPE 25 ZW M6i	M6i	8 mm	193.000.228							■	■	■	■	



ARTICLE DESCRIPTION	COUPLING THREAD	THREAD DEPTH	ARTICLE-NUMBER	0.45	0.54	0.63	0.81	1.0	1.2	1.5	1.8	2.0	2.5	3.0
TYPE 30V ZW M6i with safety nut and knurl	M6i	8 mm	193.000.310									■	■	■

CABLE HOLDER

LATERAL CABLE EXIT



ARTICLE DESCRIPTION	SUSPENSION TYPE	SLIT WIDTH	ARTICLE-NUMBER	0.45	0.54	0.63	0.81	1.0	1.2	1.5	1.8	2.0	2.5	3.0
TYPE 10 ZW SLIT	Y	1.2 mm	193.008.006	■	■	■	■	■	■	■	■	■	■	■
TYPE 12 ZW SLIT	Y	1.6 mm	193.000.136			■	■	■	■	■	■	■	■	■
TYPE 15 ZW SLIT	Y	2.0 mm	193.000.184					■	■	■	■	■	■	■
TYPE 18 ZW SLIT	Y	2.5 mm	193.000.087					■	■	■	■	■	■	■



ARTICLE DESCRIPTION	SUSPENSION TYPE	SLIT WIDTH	ARTICLE-NUMBER	0.45	0.54	0.63	0.81	1.0	1.2	1.5	1.8	2.0	2.5	3.0
TYPE 25V ZW SLIT with safety nut and knurl	Y	3.0 mm	193.000.288							■	■	■	■	■



ARTICLE DESCRIPTION	SUSPENSION TYPE	Ø CROSS BORE	ARTICLE-NUMBER	0.45	0.54	0.63	0.81	1.0	1.2	1.5	1.8	2.0	2.5	3.0
TYPE 30V ZW BORE with safety nut and knurl	Y	3.5 mm	193.000.317									■	■	■



ARTICLE DESCRIPTION	COUPLING THREAD	THREAD DEPTH	ARTICLE-NUMBER	0.45	0.54	0.63	0.81	1.0	1.2	1.5	1.8	2.0	2.5	3.0
TYPE 12 ZW HINGE M4i	M4i	4 mm	193.000.798			■	■	■	■	■	■	■	■	■
TYPE 15 ZW HINGE M4i	M4i	4 mm	193.000.194					■	■	■	■	■	■	■



ARTICLE DESCRIPTION	COUPLING THREAD	THREAD DEPTH	ARTICLE-NUMBER	0.45	0.54	0.63	0.81	1.0	1.2	1.5	1.8	2.0	2.5	3.0
TYPE 18 ZW HINGE M4i	M4i	5 mm	193.000.067					■	■	■	■	■	■	■



ARTICLE DESCRIPTION	COUPLING THREAD	THREAD DEPTH	ARTICLE-NUMBER	0.45	0.54	0.63	0.81	1.0	1.2	1.5	1.8	2.0	2.5	3.0
TYPE 30V ZW HINGE M8i with safety nut and knurl	M8i	10 mm	193.000.347									■	■	■

CABLE HOLDER

CENTRAL CABLE EXIT



ARTICLE DESCRIPTION	COUPLING THREAD	THREAD LENGTH	ARTICLE-NUMBER	0.45	0.54	0.63	0.81	1.0	1.2	1.5	1.8	2.0	2.5	3.0
TYPE 10 M6	M6	7 mm	193.008.005	■	■	■	■	■	■	■	■	■	■	■
TYPE 12 M8×1	M8×1	8 mm	193.000.139			■	■	■	■					



ARTICLE DESCRIPTION	COUPLING THREAD	THREAD LENGTH	ARTICLE-NUMBER	0.45	0.54	0.63	0.81	1.0	1.2	1.5	1.8	2.0	2.5	3.0
TYPE 15 M10×1	M10×1	6 mm	193.000.155					■	■	■	■	■	■	■
TYPE 20 M13×1	M13×1	10 mm	193.000.100					■	■	■	■	■	■	■
TYPE 25 M13×1	M13×1	10 mm	193.000.364							■	■	■	■	■



ARTICLE DESCRIPTION	DIAMETER	HOOK WIDTH	ARTICLE-NUMBER	0.45	0.54	0.63	0.81	1.0	1.2	1.5	1.8	2.0	2.5	3.0
TYPE 10 HOOK	10 mm	2.5 mm	193.008.001	■	■	■	■	■						



ARTICLE DESCRIPTION	DIAMETER	HOOK WIDTH	ARTICLE-NUMBER	0.45	0.54	0.63	0.81	1.0	1.2	1.5	1.8	2.0	2.5	3.0
TYPE 15 HOOK	10 mm	5.5 mm	193.000.163					■	■	■	■	■	■	■
TYPE 18 HOOK	11 mm	6.6 mm	193.000.121					■	■	■	■	■	■	■



ARTICLE DESCRIPTION	DIAMETER	HOOK WIDTH	ARTICLE-NUMBER	0.45	0.54	0.63	0.81	1.0	1.2	1.5	1.8	2.0	2.5	3.0
TYPE 15 DESIGN HOOK with safety gate	10.5 mm	8 mm	193.001.400					■	■	■	■	■	■	■
TYPE 18 DESIGN HOOK with safety gate	10.5 mm	8 mm	193.001.512					■	■	■	■	■	■	■



ARTICLE DESCRIPTION	DIAMETER	HOOK WIDTH	ARTICLE-NUMBER	0.45	0.54	0.63	0.81	1.0	1.2	1.5	1.8	2.0	2.5	3.0
TYPE 30V DESIGN HOOK with safety gate and nut	16 mm	13 mm	193.006.590									■	■	■

CABLE HOLDER

CENTRAL CABLE EXIT



ARTICLE DESCRIPTION	COUPLING THREAD	THREAD LENGTH	ARTICLE-NUMBER	0.45	0.54	0.63	0.81	1.0	1.2	1.5	1.8	2.0	2.5	3.0
TYPE 12 M4	M4	7.5 mm	193.000.134											
TYPE 15 M6	M6	10 mm	193.007.265											
TYPE 18 M5	M5	10 mm	193.000.001											
TYPE 25 M8	M8	6.3 mm	193.000.250											



ARTICLE DESCRIPTION	COUPLING THREAD	THREAD LENGTH	ARTICLE-NUMBER	0.45	0.54	0.63	0.81	1.0	1.2	1.5	1.8	2.0	2.5	3.0
TYPE 30V M8 with safety nut	M8	8.3 mm	193.006.048											



ARTICLE DESCRIPTION	Ø RING INTERNAL	Ø RING EXTERNAL	ARTICLE-NUMBER	0.45	0.54	0.63	0.81	1.0	1.2	1.5	1.8	2.0	2.5	3.0
TYPE 15 RING	10 mm	18 mm	193.000.159											
TYPE 18 RING	14 mm	24 mm	193.000.120											
TYPE 20S RING 6-ball mechanism	27.2 mm	42.5 mm	193.000.322											



ARTICLE DESCRIPTION	Ø RING INTERNAL	Ø RING EXTERNAL	ARTICLE-NUMBER	0.45	0.54	0.63	0.81	1.0	1.2	1.5	1.8	2.0	2.5	3.0
TYPE 25V RING with hut nut	27.2 mm	42.5 mm	193.003.081											

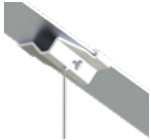


ARTICLE DESCRIPTION	Ø RING INTERNAL	Ø RING EXTERNAL	ARTICLE-NUMBER	0.45	0.54	0.63	0.81	1.0	1.2	1.5	1.8	2.0	2.5	3.0
TYPE 30V RING with safety nut	27.2 mm	42.5 mm	193.000.316											

TRACK CLIPS



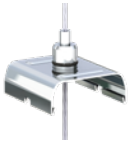
ARTICLE DESCRIPTION	ARTICLE-NUMBER	0.45	0.54	0.63	0.81	1.0	1.2	1.5	1.8	2.0	2.5	3.0
TRACK CLIP PRO T24 with bolt M6x10, white (RAL 9016)	029.005.135				■	■	■	■	■			



ARTICLE DESCRIPTION	ARTICLE-NUMBER	0.45	0.54	0.63	0.81	1.0	1.2	1.5	1.8	2.0	2.5	3.0
TRACK CLIP T24 with v-groove, bore Ø 5.1 mm for lateral mounting, white (RAL 9010)	029.005.440	■	■	■	■	■	■	■				

POWER RAIL FIXING COMPONENTS

ACCESSORY SETS



ARTICLE DESCRIPTION	ARTICLE-NUMBER	0.45	0.54	0.63	0.81	1.0	1.2	1.5	1.8	2.0	2.5	3.0
TYPE 12 / EUTRAC SYSTEM (30 × 30.8 × 12.7 mm) Stainless steel clip and cable holder Type 12 with O-Ring	193.007.820			■	■	■	■					
TYPE 12 / NORDIC SYSTEM (30 × 28.1 × 10.7 mm) Stainless steel clip and cable holder Type 12 with O-Ring	193.007.010			■	■	■	■					



ARTICLE DESCRIPTION	ARTICLE-NUMBER	0.45	0.54	0.63	0.81	1.0	1.2	1.5	1.8	2.0	2.5	3.0
TYPE 15 / EUTRAC SYSTEM (30 × 30.8 × 12.7 mm) Stainless steel clip and cable holder Type 15 ZW	193.007.818					■	■	■				
TYPE 15 / NORDIC SYSTEM (30 × 28.1 × 10.7 mm) Stainless steel clip and cable holder Type 15 ZW	193.007.151					■	■	■				